



CHEF CUBE  
CLASSICS

# CHARCUTERIE



## CITTERIO

- Capocollo, Hot | 5 lb.
- Capocollo, Sweet | 5 lb.
- Mortadella w/o pistachios | 12 lb.
- Pancetta | 6 lb. roll

## FERMÍN

- 100% Ibérico Acorn-Fed Loin, Sliced | 15 x 2 oz.
- 50% Ibérico Grain-Fed Ham, Sliced | 15 x 2 oz.
- Ibérico Longaniza Chorizo Sausage, Chub | 7 oz.
- Ibérico Longaniza Salchichon, Chub | 7 oz.
- Lomo Serrano, Half Loin | 1.8 lb.

## FORMAGGIO

- Artisan Wraps, Genoa Salami & Fresh Mozzarella | 9 x 5 oz.
- Artisan Wraps, Prosciutto & Fresh Mozzarella | 9 x 5 oz.
- Artisan Wraps, Soppressata & Fresh Mozzarella | 9 x 5 oz.
- Charcuterie Bites, Prosciutto/Fresh Mozzarella/Basil | 9 x 4 oz.
- Charcuterie Bites Twin Pack, Prosciutto & Genoa Salami | 8 x 12 oz.

## MITICA

- Culatello Classico, 14 Month | 8 lb.
- Culatta | 11 lb.
- 'Nduja | 6 oz.
- Paleta Ibérica Pura de Bellota (Shoulder), Boneless | 5 lb.
- Pancetta Piacentina DOP | 4.4 lb.
- Prosciutto di Parma, 14 Month, Boneless | 16 lb.
- San Daniele Prosciutto, Boneless | 16 lb.
- Serrano Ham | 12 lb.
- Slices | 10 x 3 oz.

Prosciutto • Salami Rustico • Speck

## MOLINARI & SONS

- Calabrese Salame | 2.5 lb.
- Sopressata Salame | 4 lb.
- Toscano Salame | 4 lb.
- Mild Coppa | 2 lb





CHEF CUBE CLASSICS

# CHARCUTERIE

## GIORGIO'S NATURALS

- Beef Bresaola | 4 x 1 lb.
- Coppa | 4 x 1 lb.
- 'Nduja Spread | 6 x 10 oz.
- Pepperoni, Sliced | 12.5 lb.
- Pork Loin | 4 x 1 lb.
- Salami Chubs | 5 oz

Beef Salami di Manzo • Beef Soppresata • Coffee & Bourbon • Maple • Mixed Berry • Orange & Ginger • Truffle

- Salami Chubs | 6 x 10 oz

Beef Salami di Manzo • Beef Soppresata • Calabrese • Sangiovese Wine • Sopressata

- Salami, Large Format | 3 lb.

Beef Salami di Manzo • Coffee & Bourbon • Mixed Berry • Orange & Ginger

- Speck | 4 x 1 lb.

## PARMACOTTO

- Boschi Fratelli Prosciutto di Parma, 16 Month, Boneless | 16 lb.
- Boschi Fratelli Prosciutto di Parma, Sliced | 12 x 3 oz.
- Boschi Fratelli Prosciutto Italiano, Sliced | 16 oz.
- Boschi Fratelli Prosciutto Italiano Mattonella | 10 lb.
- Boschi Fratelli San Daniele Prosciutto, 18-20 Month, Boneless | 16 lb.
- Boschi Fratelli San Daniele Prosciutto, Sliced | 10 x 3 oz.
- Mortadella w/ Pistachios | 5 lb.
- Mortadella w/o Pistachios, Sliced | 4 oz.
- Porchetta, Half Cut | 4 lb.
- Prosciutto Cotto (Cooked Ham) | 10 lb.
- Roasted Ham, Sliced | 4 oz
- Salami Chubs | 8 oz

Fennel • Genoa • Hot Sopressata • Milano • Pepperoni

- Salami, Large Format | 3.5 lb.

Genoa • Spinata Calabrese • Spianata Romana

- Salami Slices | 3 oz

Felino • Genoa • Milano • Pepperoni • Sopressata

- Selection Line, Sliced | 10 x 5.5 oz.

Antipasto Trio • Coppa • Mortadella w/ Pistachio • Porchetta • Prosciutto Crudo

- Speck Alto Adige, Half | 6 lb.





CHEF CUBE CLASSICS

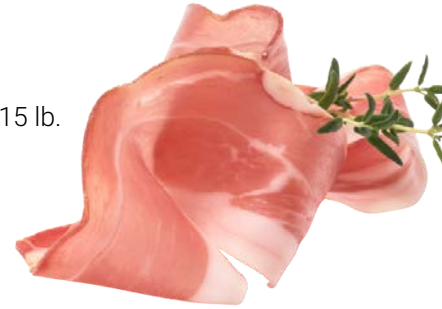
# CHARCUTERIE

## SALT & TWINE

- Salami Chubs - Antibiotic Free Heritage Pork/No Nitrates or Nitrites | 5 oz.  
Bacon & Bourbon • Chipotle Mole • Classic Bistro • Hot Calabrian • Mezcal & Salted Lime
- Slices - Antibiotic Free Heritage Pork/No Nitrates or Nitrites | 15 x 2.5 oz  
Genoa Salami • Lemon Lomo • Pepperoni • Prosciutto

## ZOE'S MEATS

- Applewood Smoked Bacon, Slab | 17 lb.
- Applewood Smoked Bacon, Sliced (10-12 slices/lb.) | 15 lb.
- Coppa, Mild | 2.5 lb.
- Guanciale, Frozen | 4 lb.
- Pepperoni, Uncured | 1.5 lb.
- Pepperoni, Uncured, Sliced | 5 lb.
- Salami Chubs, Uncured | 8 oz.  
Absinthe • Cacao • Chorizo • Ghost Pepper • Jalapeno • Original • Pepperoni • Turkey
- Salami, Full Format, Uncured  
Cabernet Sauvignon (4 lb.) • Finocchiona (3 lb.) • Original (2 lb.) • Sopressata (3 lb.)
- Saucisson Sec | 1 lb.



## OTHER CHARCUTERIE

- Bella Bella Pastrami Duck Breast | 1 lb.
- Creminelli Salami Chubs | 5.5 oz.  
Tartufo • Wild Boar
- Nueske Applewood Smoked Bacon, Slab | 13 lb.
- Redondo Serrano Ham, Boneless | 12 lb.
- Tempesta 'Nduja Spicy Spreadable Salami | 4.5 oz.
- Three Little Pigs Chorizo, Chubs | 8 oz.

