

## NOODLES, WRAPPERS & RICE

- 101659 | Ramen Noodles - Frozen | 50/140 g
- 202023 | Rice Stick Noodles - Fine | 50/14 oz.
- 200107 | Rice Stick Noodles - Fine | 6.75 oz.
- 200108 | Rice Stick Noodles - Medium | 16 oz.
- 101678 | Sanuki Udon Noodles - Frozen | 6/250 g
- 202524 | Soba Noodles - Buckwheat | 3 lb.
- 200116 | Soba Noodles - Green Tea | 22.57 oz.
- 102400 | Bamboo Leaf Boiled Sheets - Frozen | 30/100 ct.
- 101641 | Egg Roll Wrappers - Frozen | 12/16 oz.
- 101629 | Gua-Bao Folded Steam Buns - Frozen | 200 ct.
- 200094 | Nori Full Sheet - Blue | 50 ct.
- 200095 | Nori Full Sheet - Gold | 50 ct.
- 207243 | Nori Full Sheet - Silver | 50 ct.
- 200097 | Nori Half Sheet - Blue | 100 ct.
- 200096 | Nori Half Sheet - Gold | 100 ct.
- 200105 | Soy Paper - White | 20 ct.
- 200132 | Spring Roll Pastry - Frozen | 12 oz.
- 200131 | Spring Roll Wrappers | 12 oz.
- 101683 | Wonton Wrappers - Frozen | 12/12 oz.
- 220323 | Chinese Black Rice | 10 lb.
- 220307 | Green Bamboo Rice | 10 lb.
- 220331 | Nishiki Brown Rice | 40 lb.
- 221356 | Nishiki Rice - 10# | 10 lb.
- 202075 | Nishiki Rice - 50# | 50 lb.
- 220335 | Purple Sticky Rice | 10 lb.
- 202079 | Short Grain Sushi Rice | 50 lb.



## OIL & VINEGAR

- 200651 | Hot Chili Soybean Oil (Dragonfly) | 7 oz.
- 200112 | Sesame Oil | 56 oz.
- 202673 | Toasted Sesame Oil | 1 gal
- 202523 | Aji Mirin - 33.8 oz. (Kikkoman) | 33.8 oz.
- 200092 | Aji Mirin - 60 oz. (Kikkoman) | 60 oz.
- 200734 | Black Vinegar (Koon Chun) | 16.9 oz.
- 251022 | Japanese Sushi Vinegar | 4.75 gal
- 205001 | Ponzu Vinegar (Marukan) | 1 gal
- 200109 | Ryo-Ri-Sake Rice Wine | 4.75 gal
- 200140 | Seasoned Rice Vinegar | 5.28 gal
- 200091 | Shin-Mirin | 5 gal



## SAUCES & PASTES

- 200063 | Black Bean Garlic Sauce (Lee Kum Kee) | 8 oz.
- 200067 | Chili Garlic Sauce (Huy Fong Foods) | 1 gal
- 200147 | Fish Sauce - Whiskey Barrel Aged (Haku) | 25 oz.
- 200077 | Fish Sauce (Three Crabs) | 25 oz.
- 200156 | Ginger Ponzu - Unfiltered (Yakami Orchard) | 750 ml
- 200083 | Hoisin Sauce (Koon Chun) | 5 lb.
- 200098 | Oyster Sauce (Kikkoman) | 64 oz.
- 200100 | Plum Sauce (Koon Chun) | 5 lb.
- 200110 | Sambal Oelek (Huy Fong Foods) | 1 gal
- 202717 | Shirodashi | 1.8 liter
- 206177 | Sriracha (Dynasty) | 20 oz.
- 200133 | Sriracha (Huy Fong Foods) | 28 oz.
- 203030 | Sushi Sauce | 1.8 liter
- 200136 | Sweet Thai Chili Sauce (Mae Ploy) | 25 oz.
- 200135 | Sweet Thai Chili Sauce (Savor Imports) | 3 liter
- 200065 | Tonkatsu Sauce (Bull Dog) | 60 oz.
- 202718 | Unagi Eel Sauce | 1.8 liter
- 207040 | Unagi Eel Sushi Sauce (Kikkoman) | 2.4 kg
- 200071 | Curry Paste - Green (Mae Ploy) | 35 oz.
- 200072 | Curry Paste - Red (Mae Ploy) | 35 oz.
- 200074 | Curry Paste - Yellow (Mae Ploy) | 35 oz.
- 207035 | Gochujang Hot Pepper Paste | 2.2 lb.
- 200087 | Gochujang Hot Pepper Paste | 6.6 lb.
- 100062 | Miso Paste - Red | 10/1 kg
- 100059 | Miso Paste - White/Organic (Tetsujin) | 2.2 lb.
- 200115 | Shrimp Paste (Dragonfly) | 7 oz.



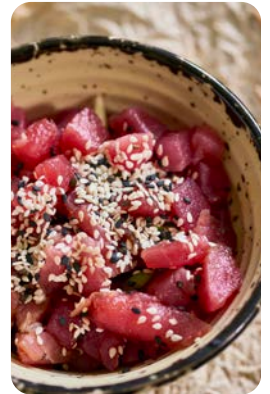
## SHOYU, SOY & TAMARI

- 200144 | Black Garlic Shoyu (Haku) | 16.9 oz.
- 200145 | Cherry Blossom Shoyu (Haku) | 12 oz.
- 200146 | Cherry Blossom Shoyu (Haku) | 25 oz.
- 200152 | Less Salt Shoyu (Takuko) | 1.8 liter
- 200160 | Nikiri Sweet Shoyu (Takuko) | 1.8 liter
- 200148 | Smoked Shoyu (Haku) | 12 oz.
- 200149 | Smoked Shoyu (Haku) | 25 oz.
- 200161 | Tamari Shoyu - Gluten Free (Takuko) | 1.8 liter
- 200150 | Whiskey Barrel Aged Shoyu (Haku) | 12 oz.
- 200151 | Whiskey Barrel Aged Shoyu (Haku) | 25 oz.
- 200158 | White Shoyu (Takuko) | 25 oz.
- 200119 | Lite Soy Sauce - 5 Gallon (Kikkoman) | 5 gal
- 200120 | Lite Soy Sauce - 64 oz. (Kikkoman) | 64 oz.
- 200121 | Lite Soy Sauce - Packets (Kikkoman) | 400 ct.
- 200129 | Lite Soy Sauce - Bag-in-Box (Yamasa) | 5 gal
- 200122 | Mushroom Soy Sauce | 1.8 liter
- 200123 | Soy Sauce - 1 Gallon (Kikkoman) | 1 gal
- 200124 | Soy Sauce - 5 Gallon (Kikkoman) | 5 gal
- 200125 | Soy Sauce - Packets 400 ct. (Kikkoman) | 400 ct.
- 251057 | Soy Sauce - Packets 1000 ct. (Kikkoman) | 1000 ct.
- 200130 | Soy Sauce - 5 Gallon (Yamasa) | 5 gal
- 200126 | Sweet Soy Sauce | 20.9 oz.
- 200118 | Tamari Soy Sauce - Gluten Free (Kikkoman) | 64 oz.
- 200137 | Tamari Soy Sauce - Gluten Free (San-J) | 64 oz.
- 200128 | White Soy Sauce | 60 oz.



## SEAFOOD

- 101660 | Chuka Idako/Seasoned Baby Octopus - Frozen | 4.4 lb.
- 101658 | Madako Tako/Sliced Octopus - Frozen | 20 pc.
- 101656 | Ebi Shrimp - Nobashi 16/20 Frozen | 30/20 ct.
- 102428 | Ebi Shrimp - Nobashi 21/25 Frozen | 30/25 ct.
- 102431 | Ebi Shrimp - Panko Breaded/Frozen | 12/10 ct.
- 101635 | Ebi Shrimp - White 5L | 30 ct.
- 101636 | Ebi Shrimp - White 6L | 30 ct.
- 102450 | Shrimp Tempura Fried Tail-On 16/20 | 4/30 ct.
- 101682 | Escolar (White Tuna) Saku - Frozen | 2.2 lb.
- 101645 | Hamachi Fillet - Bone-In/Frozen | 5 lb.
- 101652 | Hamachi Loin - Frozen | 11 lb.
- 101699 | Imitation Crab Meat - Flaked/Frozen | 2.5 lb.
- 102422 | Imitation Crab Meat Kanikama - Black Label/Frozen | 1 lb.
- 101651 | Imitation Crab Meat Kanikama - Shreds/Frozen | 12/2.5 lb.
- 101648 | Imitation Crab Meat Kanikama - Sticks/Frozen | 1 lb.
- 101647 | Imitation Crab Meat Kanikama - Sticks/Frozen (Tetsujin) | 1 lb.
- 102425 | Kanikama Imitation Snow Crab Legs | 20/1.1 lb.
- 101679 | Kabayaki Unagi Eel - Frozen | 11 lb.
- 108201 | Maguro Ground Tuna - 10# Frozen | 10 lb.
- 101676 | Maguro Ground Tuna - 11# Frozen | 11 lb.
- 103129 | Tuna Loin AAA Center Cut - Frozen | 30 lb.
- 103131 | Tuna Poke - Frozen | 11/1 lb.
- 101873 | Tuna Poke - Frozen | 10/1 lb.
- 103554 | Tuna Poke Strips - Frozen | 10 lb.
- 101875 | Tuna Saku Block AAA+ - Frozen | 11 lb.
- 200066 | Tuna/Bonito Flakes | 1 lb.



## TOBIKO & ROE

- 101672 | Tobiko Flying Fish Roe - Black/Frozen | 1 lb.
- 101674 | Tobiko Flying Fish Roe - Orange/Frozen | 1 lb.
- 101675 | Tobiko Flying Fish Roe - Red/Frozen | 1 lb.
- 101673 | Tobiko Flying Fish Roe - Wasabi Green/Frozen | 1 lb.
- 100169 | Salmon Roe | 56 g
- 102671 | Salmon Roe | 2 oz.



## SALADS

- 101661 | Calamari Salad - Frozen | 2.2 lb.
- 101668 | Gari Tako Sansai Salad - Frozen | 4.4 lb.
- 101663 | Hijiki Seaweed Salad - Frozen | 4.4 lb.
- 100078 | Marinated Octopus Salad | 2.2 lb.
- 103239 | Octopus Salad | 7 oz.
- 101664 | Shiitake Mushroom Salad - Frozen | 4.4 lb.
- 101669 | Wakeme Salad - All Natural/Frozen | 4.4 lb.
- 101670 | Wakeme Salad - Gluten Free/No MSG/Frozen | 2.2 lb.
- 101667 | Wakeme Salad - Spicy/Frozen | 4.4 lb.



## SPICES, SEASONINGS & SEEDS

- 200080 | Furikake Rice Seasoning | 1.7 oz.
- 202730 | Gochugaru Chile Flakes - Gallon | 4 lb. gal
- 220354 | Gochugaru Chile Flakes - Quart | 1 lb. quart
- 221239 | Sesame Seeds - Black/Gallon | 5 lb. gal
- 221238 | Sesame Seeds - Black/Quart | 1.25 lb. quart
- 200111 | Sesame Seeds - Black/Roasted | 2.2 lb.
- 221243 | Sesame Seeds - White/Gallon | 5 lb. gal
- 221242 | Sesame Seeds - White/Quart | 1.25 lb. quart
- 200113 | Sesame Seeds - White/Roasted | 2.2 lb.
- 200069 | Togarashi Powder | 10.58 oz.
- 220859 | Wasabi Powder - Quart | 1 lb. quart



## VEGETABLES, EDAMAME & EGGS

- 200141 | Black Garlic - Whole | 17.6 oz.
- 200142 | Black Garlic - Whole/Peeled | 16 oz.
- 202198 | Fried Garlic | 21 oz.
- 200078 | Fried Onions | 14 oz.
- 202473 | Kimchi - Classic (Cleveland Kitchen) | 2 gal
- 204350 | Kimchi - Mild (Cleveland Kitchen) | 2 gal
- 100123 | Pickled Ginger - White/All Natural | 20 lb.
- 100054 | Pickled Ginger - Pink | 2 lb.
- 100055 | Pickled Ginger - White | 2 lb.
- 101650 | Seasoned Gourd Shavings/Ajitsuke Kanpyo - Frozen | 2.2 lb.
- 102411 | Edamame Soybeans - In Pod/Frozen | 20/14 oz.
- 102413 | Edamame Soybeans - Shelled/Frozen | 20/14 oz.
- 101642 | Egg Omelette/Tamago Yaki - Frozen | 500 g
- 102391 | Quail Eggs | 18 ct.



## OTHER INGREDIENTS

- 200143 | Black Garlic Molasses | 8.8 oz.
- 200064 | Black Sesame Rice Crackers | 12 oz.
- 201498 | Coconut Milk (Chaokoh) | 24/14 oz.
- 200085 | Dashi Kombu/Dried Kelp | 2 lb.
- 201430 | Fine Rice Flour (Erawan) | 24/1 lb.
- 200089 | Lye Water | 12/20 oz.
- 200099 | Panko Breadcrumbs | 20 lb.
- 200114 | Shrimp Chips | 5 lb.
- 200138 | Tempura Batter Mix - Gold Label | 30 lb.
- 200139 | Tempura Batter Mix - Orange Label | 30 lb.
- 201799 | Wasabi Coated Peas | 2/11 lb.
- 100064 | Yuzu Citrus Juice | 24.3 oz.

